



SERIE: NIZA

REF.M-023523+B

Descripción

Collection of LED outdoor inground lights, equipped with high performance light emitting diode. Body made of aluminum injection, diffuser in tempered glass. Protection against the penetration of solid and liquid particles. Allows its installation outdoors. Pre-wired luminaire

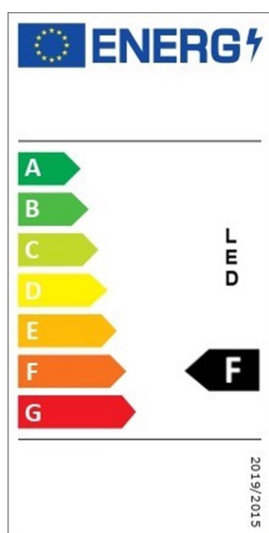
Colección de empotrables de exterior LED, equipados con diodo emisor de luz de alto rendimiento. Cuerpo fabricado en inyección de aluminio, difusor en glass. Protección contra la penetración de partículas sólidas y líquidas. Permite su instalación al aire libre. Luminaria precableada



FINISHES AVAILABLE

INOX.

ENERGY EFFICIENCY



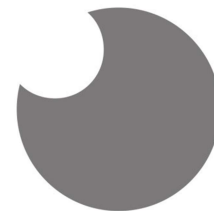
TECHNICAL DATA SHEET

Application	RECESSED
IP Rating	IP67
Light source	LED 1507
Wattage	8W
Chip Brand	CREE
CCT Kelvin	3000 / 4000 / 5700K
Lumen	960 - 600
IF—VF	200 mA—27-40V
C.R.I	≥ 80
SDCM	≤ 5
IK	10
Beam Angle	50°, 77°
Input Voltage—Frequency	100-240V~ 50/60Hz
Electrical Classification	I
Lifespan	25000h. L70B50
Driver	Inside—Included
Power Factor:	≥0.8
Power Efficiency	84%
Measure mm	Dia.149x 115 mm
Working humidity	10%~90%RH
Weight Kg.	1.47
Working humidity	-30°~+45°
Lighting distance	8 m
Certificates - Standard	CE - IEC 60598-1/IEC 62031
Warranty years	5

MATERIALES / ACABADOS

Structure material	Stainless Steel & High quality aluminum
Diffuser Material	Tempered glass
Structure finishing	Anti - UV powder coating finish
Diffuser finishing	clear

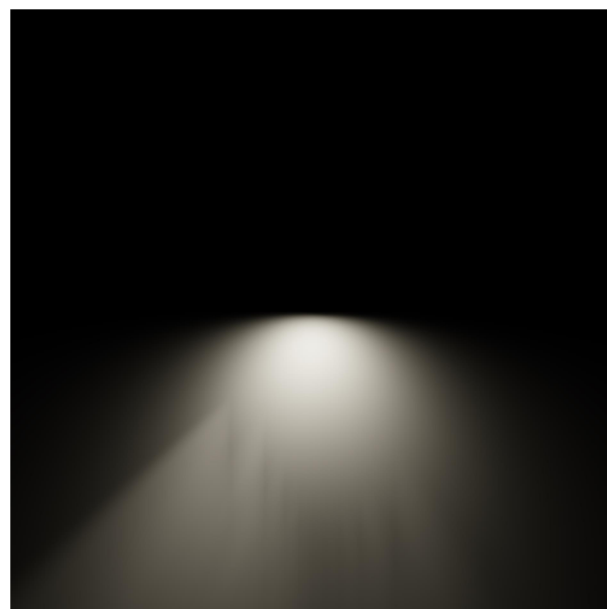
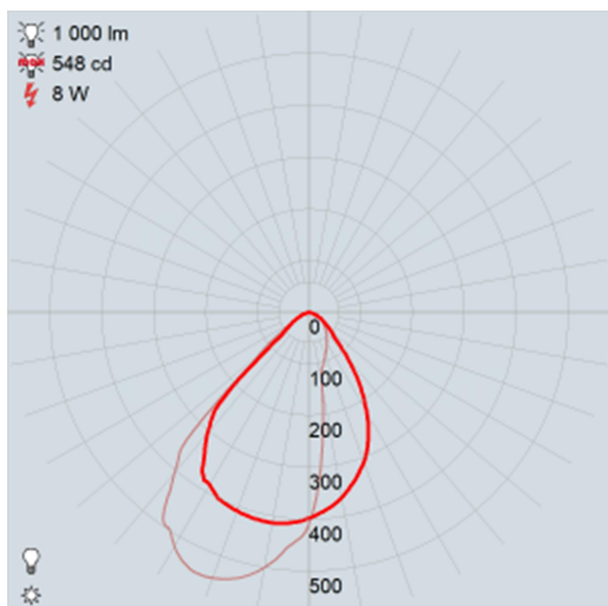
IBERLAMP reserves the right to carry out the appropriate technical modifications in order to improve the performance of the product.
We recommend consulting with the sales team to clarify any doubts.



IBERLAMP

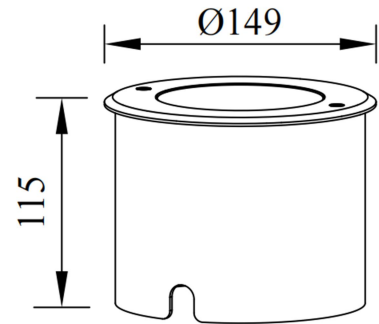
Photometric Results

CIE Class:	Direct
Total Rated Lamp Lumens:	600 lm
Measurement Flux:	600 lm
Efficiency:	65.1 %
Downward Ratio:	0%
Upward Ratio:	65.1%
Luminaire Efficiency Rating (LER):	77.21
Central Intensity:	340 cd
Max. Intensity:	340 cd
Pos. Of Max Intensity:	H22.0 V6.0
IES File Name	M-023523+B

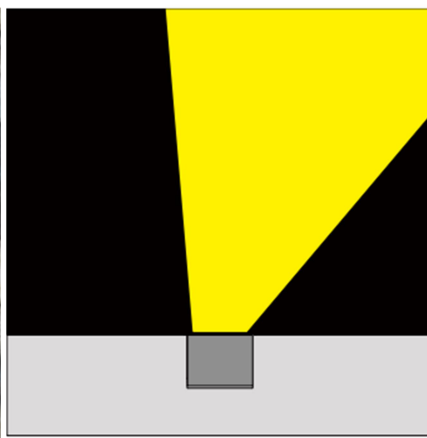
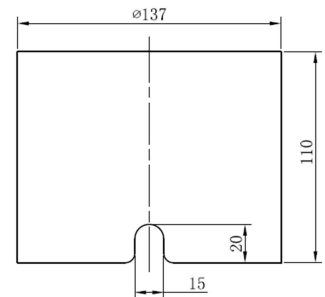




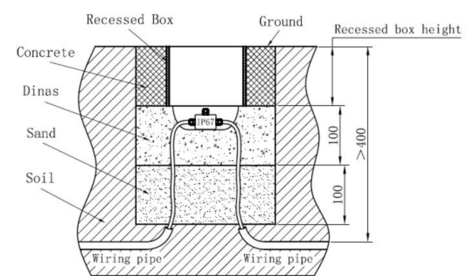
IBERLAMP



Recessed Box



CAJA DE EMPOTRAR / THE RECESSED BOX
EN ALUMINIO PURO, PARA UNA MEJOR DISIPACION DEL CALOR
IN PURE ALUMINIUM, FOR BETTER HEAT DISSIPATION
Instalación más sencilla y segura / Simpler and safer installation



▲ Caution: The reserved holes must be lay as the told method, recessed box must keep flushing with ground. Always use a wire connector not less than IP67.



IBERLAMP reserves the right to make the necessary technical modifications in order to improve the performance of the product.

We recommend consulting with the commercial team to answer any questions.