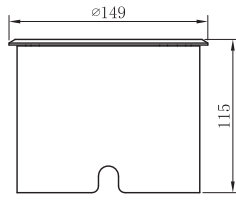


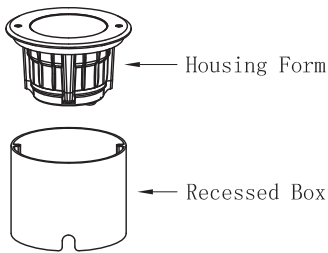
# Mounting Instruction

## Product Parameters

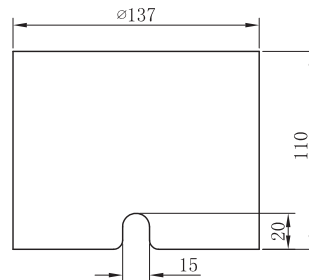


1. Model: **M-023523+B**
2. Rated Voltage: AC 100–240V
3. Rated Power: LED 8W
4. IP Grade: IP67
5. Insulation protection level: Class I
6. Operating Temperature:  $-30\sim+45^{\circ}\text{C}$

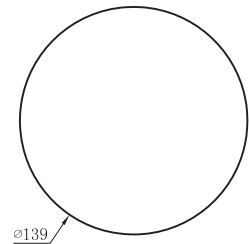
## Components and Tools



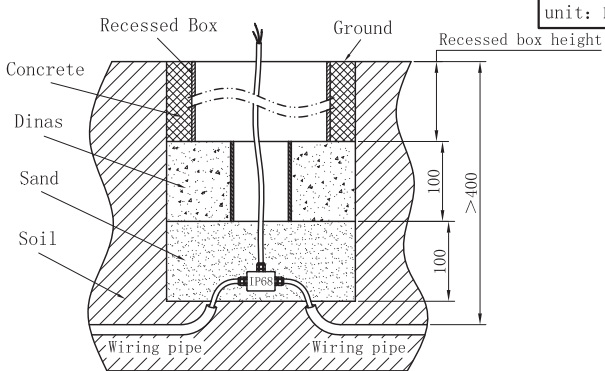
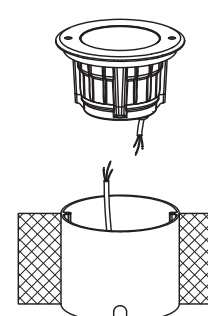
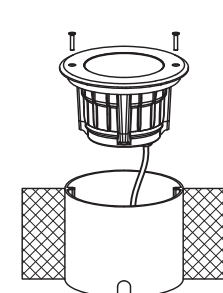
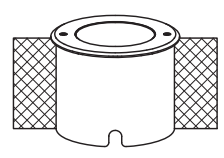
Recessed Box



Mounting holes



## Installation Steps

<p><b>A</b></p>  <p style="text-align: right; font-size: small;">unit: mm</p> <p><b>OFF</b></p> <p>▲ Caution: The reserved holes must be lay as the told method, recessed box must keep flushing with ground. Always use a wire connector not less than IP68.</p>	<p><b>B</b></p>  <p><b>OFF</b></p> <p>▲ Wiring must be operated in accordance with construction specifications.</p>	<p><b>C</b></p>  <p>▲ Make sure the screws be fixed tightly.</p>
<p><b>D</b></p>  <p><b>ON</b></p> <p>✓</p> <p>▲ Connect the power supply, and light up the lamp.</p>		

## Notes:

1. Read this manual of instructions carefully before installation and keep it for future reference;
2. The lamps should be installed or repaired by professional electricians;
3. The light source of this lamp should be replaced by the manufacturer or its service agent or a similarly qualified person;
4. If the external flexible cord of this lamp is damaged, for the sake of avoiding hazard the cord should be replaced by the manufacturer or its service agent or a similarly qualified person;
5. Check the power switch has been turned off before install or repair the lamp.