



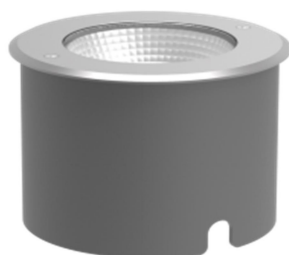
SERIE: NIZA

REF. M-013523+B

Descripción

Collection of LED outdoor wall lights, equipped with high performance light emitting diode. Body made of aluminum injection, diffuser in Tempered Glass. Protection against the penetration of solid and liquid particles. Allows its installation outdoors. Pre-wired luminaire

Colección de apliques de exterior LED, equipados con diodo emisor de luz de alto rendimiento. Cuerpo fabricado en inyección de aluminio, difusor en Vidrio Templado. Protección contra la penetración de partículas sólidas y líquidas. Permite su instalación al aire libre. Luminaria precableada

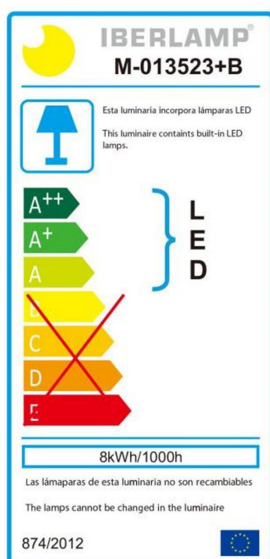


FINISHES AVAILABLE

DARK GREY

MATT BLACK

ENERGY EFFICIENCY



TECHNICAL DATA SHEET

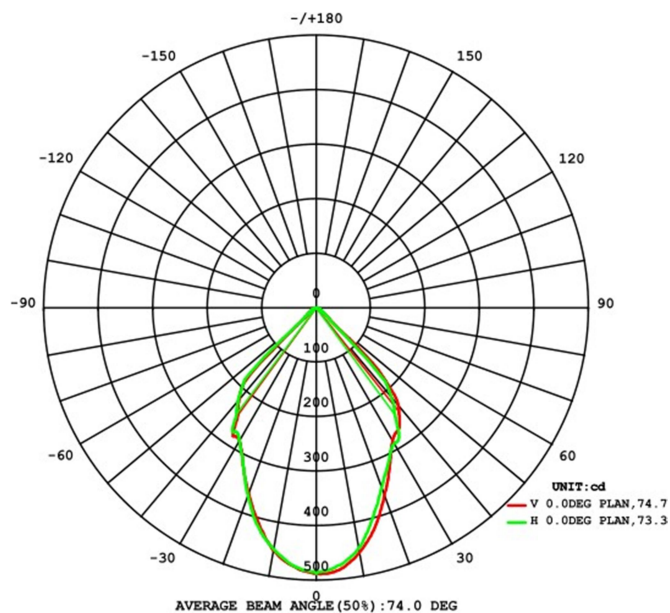
| | |
|------------------------------|---------------------------------|
| Application | SURFACE |
| IP Rating | IP67 |
| Light source | LED 1304 |
| Wattage | 8 W |
| Chip Brand | CREE |
| CCT Kelvin | 3000 / 4000 / 5000K |
| Lumen | 600 |
| IF—VF | 200 mA—27-40V |
| C.R.I | ≥ 80 |
| SDCM | ≤ 5 |
| IK | 10 |
| Beam Angle | 75 ° |
| Input Voltage—Frequency | 100-240V~ 50/60Hz |
| Electrical Classification | I |
| Lifespan | 25000h. L70B50 |
| Driver | Inside—Included |
| Power Factor: | 0.9 |
| Power Efficiency | 84% |
| Measure mm | Φ 149 x 115 mm. |
| Working humidity | 10%~90%RH |
| Weight Kg. | 1.4 |
| Working humidity | -30°~+45° |
| Lighting distance | 7 m |
| Certificates - Standard | CE - IEC 60598-1/IEC 62031 |
| Warranty years | 3 |
| MATERIALES / ACABADOS | |
| Structure material | High quality aluminum |
| Diffuser Material | Glass |
| Structure finishing | Anti - UV powder coating finish |
| Diffuser finishing | Clear |

IBERLAMP reserves the right to carry out the appropriate technical modifications in order to improve the performance of the product. We recommend consulting with the sales team to clarify any doubts.



Photometric Results

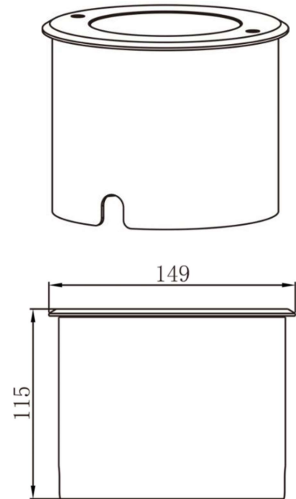
| | |
|------------------------------------|------------|
| CIE Class: | Direct |
| Total Rated Lamp Lumens: | 600 lm. |
| Measurement Flux: | 600 lm. |
| Efficiency: | 74.8 % |
| Downward Ratio: | 74.8% |
| Upward Ratio: | 0.0% |
| Luminaire Efficiency Rating (LER): | 75 |
| Central Intensity: | 488.4 cd. |
| Max. Intensity: | 488.4 cd. |
| Pos. Of Max Intensity: | H-1.0 V0.0 |
| IES File Name | M-013523+B |



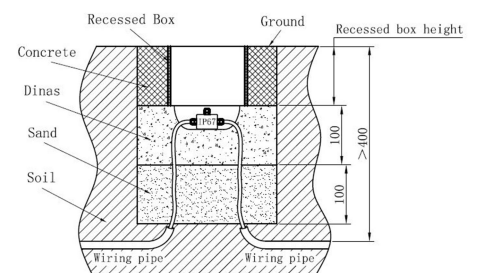
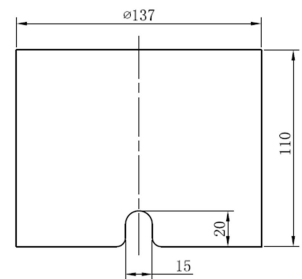
The results shown correspond to the production standards. Any modification of these standards may alter the results displayed.



IBERLAMP



Recessed Box



▲ Caution: The reserved holes must be lay as the told method, recessed box must keep flushing with ground. Always use a wire connector not less than IP67.

IBERLAMP reserves the right to make the necessary technical modifications in order to improve the performance of the product.

We recommend consulting with the commercial team to answer any questions.