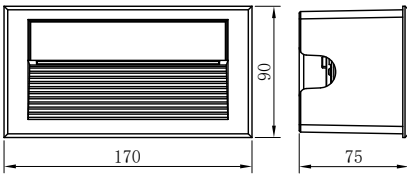


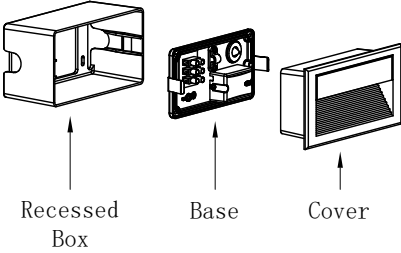
Mounting Instruction

Product Parameters

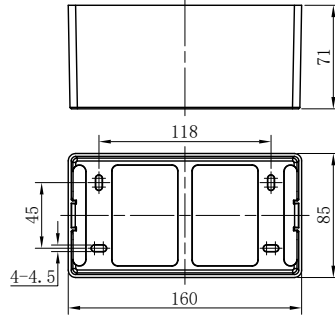


1. Model: 3868+B
2. Rated Voltage: AC 100-240V
3. Rated Power: LED 6W
4. IP Grade: IP65
5. Insulation protection level: Class I
6. Operating Temperature: $-30^{\circ}\text{C} \sim 45^{\circ}\text{C}$

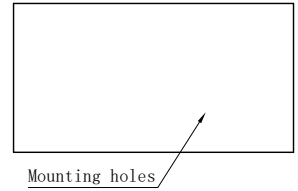
Components and Tools



Recessed Box

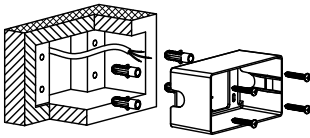


Mounting holes



Installation Steps

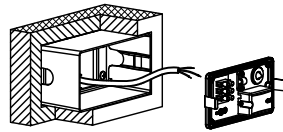
A



OFF

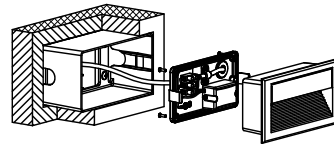
▲ The recessed box must be fixed tightly.

B



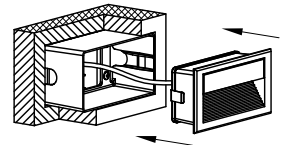
▲ Wiring must be operated in accordance with construction specifications.

C

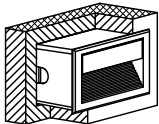


▲ Should be used diagonal way to lock screws by twice;
 ①. At first, please lock the screws half;
 ②. Secondly, lock the screws tightly.

D



E



ON

▲ Connect the power supply, and light up the lamp.

F

G

H

Notes:

1. Read this manual of instructions carefully before installation and keep it for future reference;
2. The lamps should be installed or repaired by professional electricians;
3. The light source of this lamp should be replaced by the manufacturer or its service agent or a similarly qualified person;
4. If the external flexible cord of this lamp is damaged, for the sake of avoiding hazard the cord should be replaced by the manufacturer or its service agent or a similarly qualified person;
5. Check the power switch has been turned off before install or repair the lamp.